

Mounting:	ceiling
Environment:	indoor
Typical use:	residential, hotels, restaurants, common areas, large spaces, meeting rooms, museums, offices, schools, shops

OPTIC

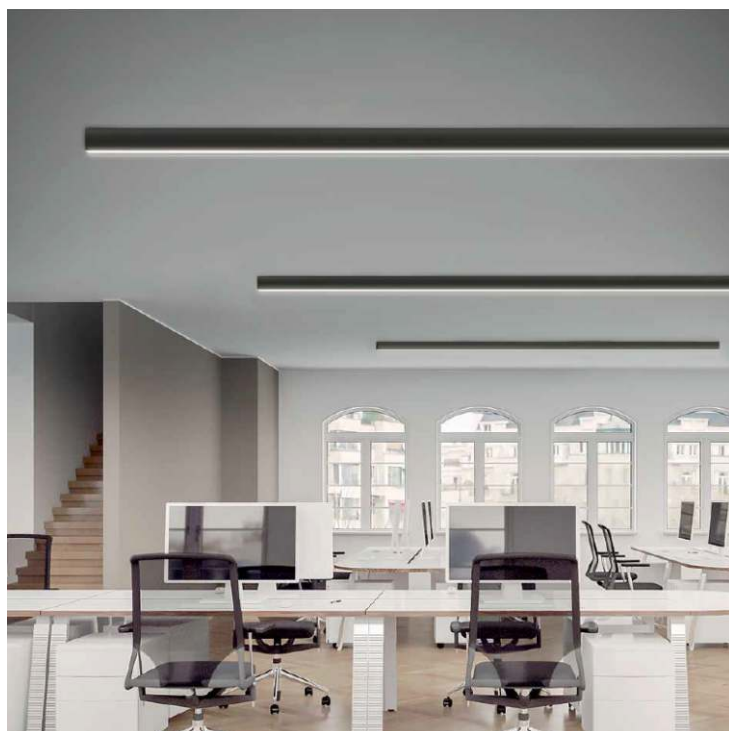
Lighting effects:	down ugr with prismatic E19	- down diffused with E2 opal
Light output:	down prismatic 21'240lm	- down opal 18'054lm
CCT:	3'000K (2'700K or 4'000K on request)	
Light source:	led SMD	C.R.I.>90
Nominal life time:	50'000h	L80B20 (Ta 25°C)

ELECTRICAL DATA

Wattage:	down 212W
Voltage:	220VAC
Power Supply:	on/off driver included inside the lamp

DIMENSIONS & WEIGHT

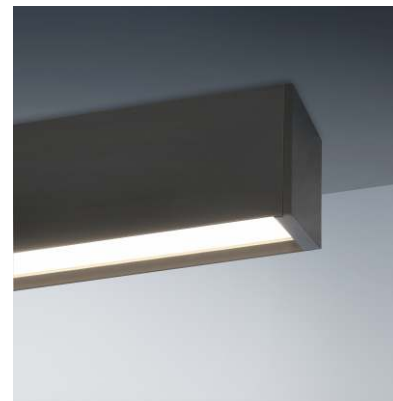
Dimensions:	length 675cm Height 8.5cm Width 5.5cm
Ambient temperature range:	-10 / +35°C
Materials:	body: extruded aluminum cover: pmma OPAL / pmma PRISM
Weight:	12,5 kg



CODES

Rev.B

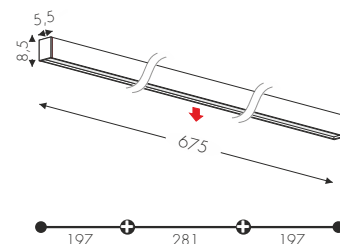
303000FE2 (opal)
303000FE19 (prism)



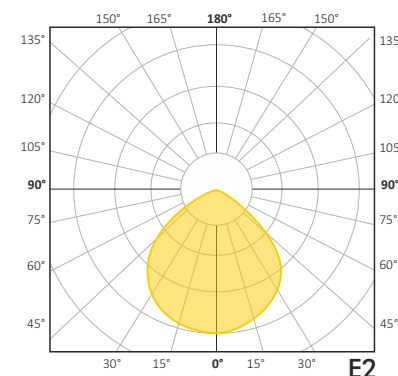
Mirò ceiling
designed by TI Lighting LAB

Ceiling linear lamp, lenght 675cm,
composed by two 197cm modules and one
281cm module.
DOWN light emission

☐ BV White




CERTIFICATE



OPTIONS

DIMMABLE DALI (Push)

Code:  3030ODME2 (opal)
3030ODME19 (prism)

STRUCTURE FINISHES

on request:
black

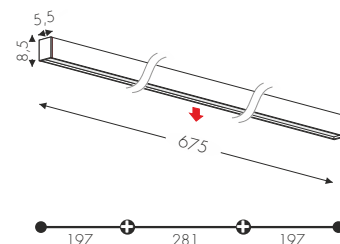
3030OOF E2 (opal)
3030OOF E19 (prism)



Mirò ceiling
designed by TI Lighting LAB

Ceiling linear lamp, lenght 675cm,
composed by two 197cm modules and one
281cm module.
DOWN light emission

☐ BV White



CERTIFICATE

