

Mounting:	recessed
Environment:	indoor
Typical use:	residential, hotels, restaurants, common areas, meeting rooms, museums, offices, schools, shops

OPTIC

Lighting effects:	down 24° optic
Light output:	down adjustable 1x680lm
CCT:	3'000K (4'000K on request)
Light source:	Led SMD C.R.I.>90
Nominal lifetime:	50'000h L80B20 (Ta 25°C)

ELECTRICAL DATA

Wattage:	1x7W
Voltage:	350mA - 20V
Power supply:	not included

WEIGHT & DIMENSIONS

Dimensions:	Length 8cm Width 8cm Height 4,5cm Spotlight Ø4cm H9cm
--------------------	--

Ambient temperature range:	-10 / +35°C
-----------------------------------	-------------

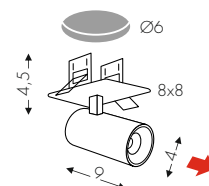
Materials:	body: metal cover: 24° optic
-------------------	---------------------------------

Weight:	1kg
----------------	-----



Tablet Square recessed 1 spotlight
designed by TI Lighting LAB

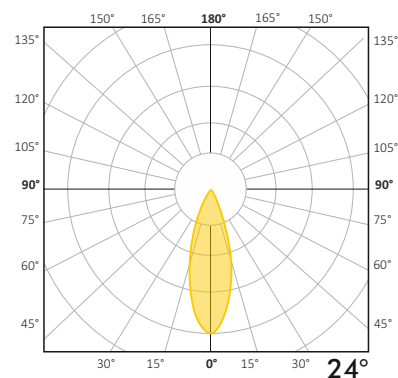
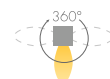
Recessed lamp, base dimensions 8x8cm, height 4,5cm, with adjustable spotlight Ø4cm H9cm.
Adjustable DOWNLIGHT emission.



CERTIFICATIONS



LIGHT EMISSION



OPTIONS

DIMMABLE DALI (Push)

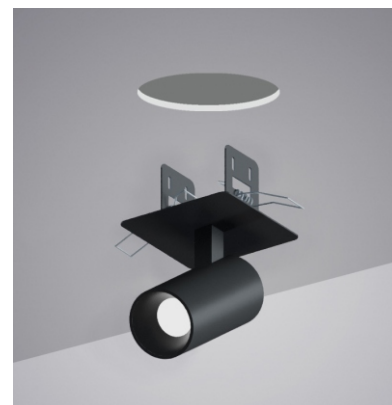
Code:  not available

PHASE CUT

Code: not available

STRUCTURE FINISHES

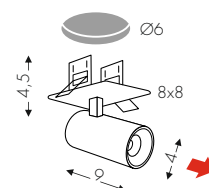
 BV white



Tablet Square recessed 1 spotlight
designed by TI Lighting LAB

Recessed lamp, base dimensions 8x8cm, height 4,5cm, with adjustable spotlight Ø4cm H9cm.
Adjustable DOWNLIGHT emission.

 NE Black



CERTIFICATIONS



LIGHT EMISSION

