

<b>Mounting:</b>	pendant
<b>Environment:</b>	indoor
<b>Typical use:</b>	residential, hotels, restaurants, common areas, large spaces, meeting rooms, museums, offices, schools, shops

## **OPTIC**

<b>Lighting effects:</b>	down ugr with prismatic E19	- down diffused with E2 opal
<b>Light output:</b>	down prismatic 10'120lm	- down opal 8'602lm
<b>CCT:</b>	3'000K (4'000K on request)	
<b>Light source:</b>	Led SMD	C.R.I.>90
<b>Nominal lifetime:</b>	50'000h	L80B20 (Ta 25°C)

## **ELECTRICAL DATA**

<b>Wattage:</b>	down 111W
<b>Voltage:</b>	24VDC
<b>Power supply:</b>	not included

## **DIMENSIONS & WEIGHT**

**Dimensions:** lenght 506cm Height 6,5cm Width 4,3cm

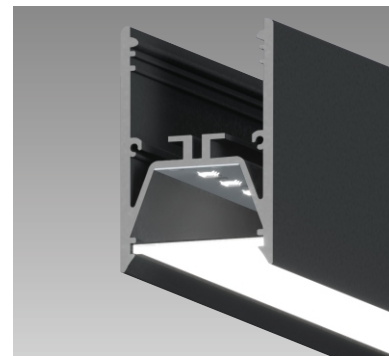
**Ambiente temperature range:** -10 / +35°C

**Materials:**  
body: extruded aluminum  
cover: pmma OPAL / pmma PRISM

**Weight:** 10 kg



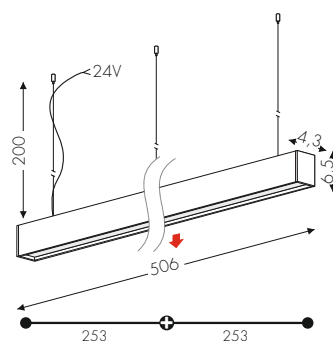
1037ME2 (opal)  
1037ME19 (prism)



**Emme24 suspension**  
designed by TI Lighting LAB

Suspension linear lamp, lenght 506cm,  
composed by two 253cm modules.  
DOWN light emission.

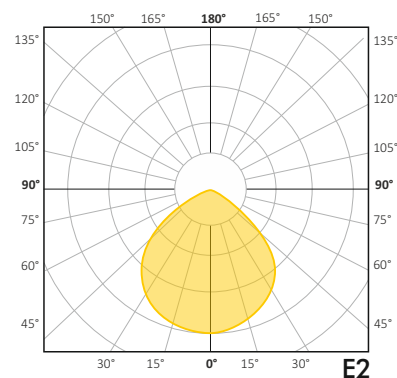
<input type="checkbox"/> BV	White
<input checked="" type="checkbox"/> NE	Black



## **CERTIFICATIONS**



## **LIGHT EMISSION**



## OPTIONS

### DIMMABLE DALI (Push)

Code:  not available

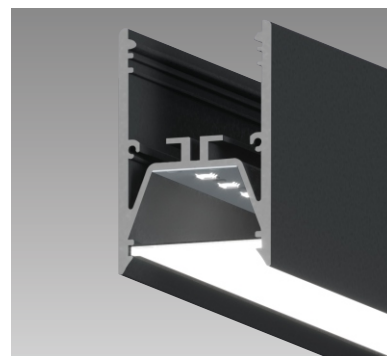
### PHASE CUT

Code: not available

### STRUCTURE FINISHES

white/black

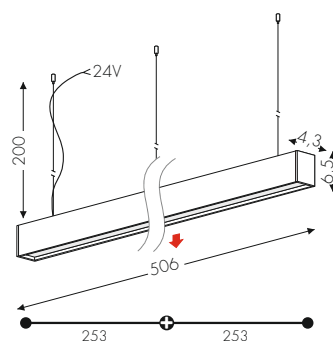
1037ME2 (opal)  
1037ME19 (prism)



**Emme24 suspension**  
designed by TI Lighting LAB

Suspension linear lamp, lenght 506cm,  
composed by two 253cm modules.  
DOWN light emission.

<input type="checkbox"/> BV	White
<input checked="" type="checkbox"/> NE	Black



## CERTIFICATIONS



## LIGHT EMISSION

