

Mounting:	pendant
Environment:	indoor
Typical use:	residential, hotels, restaurants, common areas, large spaces, meeting rooms, museums, offices, schools, shops

OPTIC

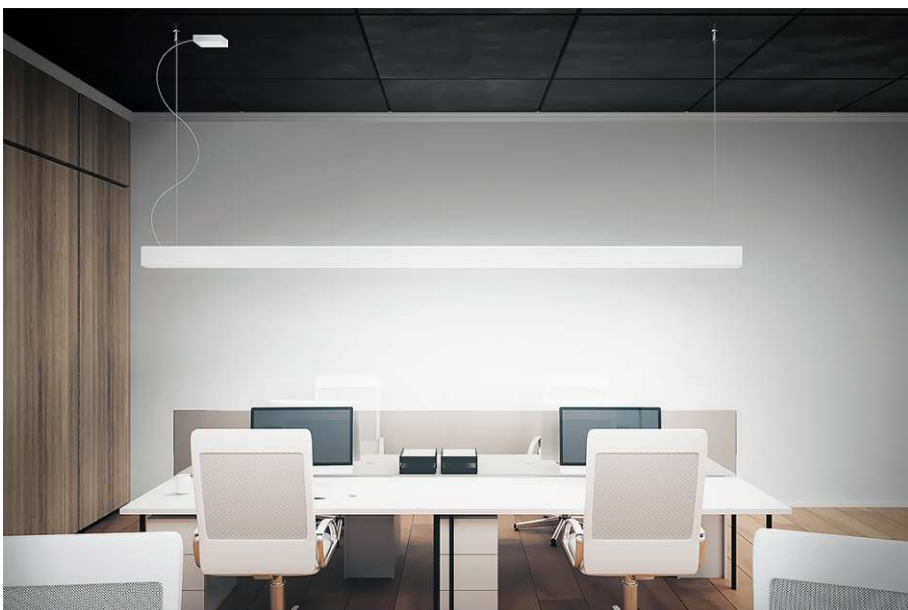
Lighting effects:	down ugr with prismatic E19	- down diffused with E2 opal
Light output:	down prismatic 6'195lm	- down opal 5'265lm
CCT:	3'000K (4'000K on request)	
Light source:	led SMD	C.R.I.>90
Nominal life time:	50'000h	L80B20 (Ta 25°C)

ELECTRICAL DATA

Wattage:	down 62W
Voltage:	220VAC
Power supply:	on/off driver included inside the lamp

DIMENSIONS & WEIGHT

Dimensions:	length 197cm Height 8.5cm Width 5.5cm
Ambient temperature range:	-10 / +35°C
Materials:	body: extruded aluminum cover: pmma OPAL / pmma PRISM
Weight:	3 kg



CODES

Rev.A

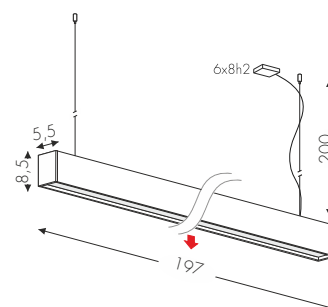
1034EOFE2 (opal)
1034EOFE19 (prism)



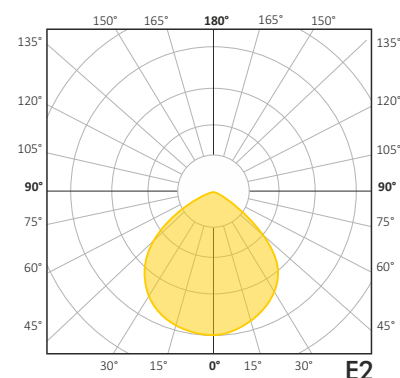
Mirò suspension
designed by TI Lighting LAB

Suspension linear lamp, length 197cm.
DOWN light emission

<input type="checkbox"/> BV	White
<input checked="" type="checkbox"/> NE	Black




CERTIFICATE



OPTIONS

DIMMABLE DALI (Push)

Code:  1034EDME2 (opal)
1034EDME19 (prism)

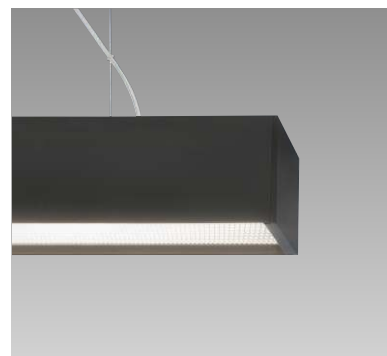
STRUCTURE FINISHES

White/Black

CODES

Rev.A

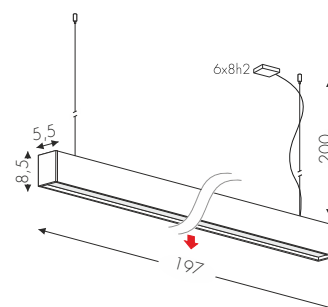
1034EOFE2 (opal)
1034EOFE19 (prism)



Mirò suspension
designed by TI Lighting LAB

Suspension linear lamp, lenght 197cm.
DOWN light emission

☐ BV White
☐ NE Black



CERTIFICATE

