

Mounting:	pendant
Environment:	indoor
Typical use:	residential, hotels, restaurants, common areas, large spaces, meeting rooms, museums, offices, schools, shops

OPTIC

Lighting effects:	down ugr with prismatic E19	- down diffused with E2 opal
Light output:	down prismatic 24'780lm	- down opal 21'063lm
CCT:	3'000K (4'000K on request)	
Light source:	led SMD	C.R.I.>90
Nominal life time:	50'000h	L80B20 (Ta 25°C)

ELECTRICAL DATA

Wattage:	down 246W
Voltage:	220VAC
Power supply:	on/off driver included inside the lamp

DIMENSIONS & WEIGHT

Dimensions:	length 787cm Height 8.5cm Width 5.5cm
Ambient temperature range:	-10 / +35°C
Materials:	body: extruded aluminum cover: pmma OPAL / pmma PRISM
Weight:	14,5 kg



CODES

Rev.A

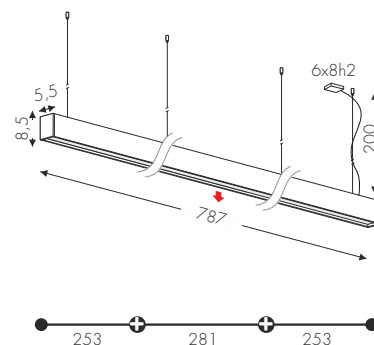
1034POFE2 (opal)
1034POFE19 (prism)



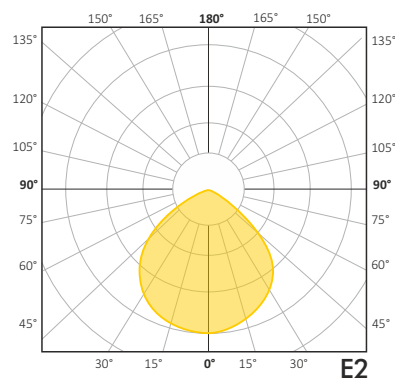
Mirò suspension designed by TI Lighting LAB

Suspension linear lamp, lenght 787cm,
composed by two 253cm modules and one
281cm module.
DOWN light emission

<input type="checkbox"/> BV	White
<input checked="" type="checkbox"/> NE	Black



CERTIFICATE



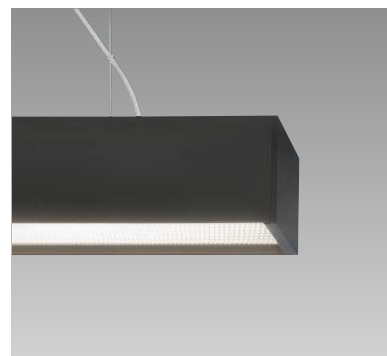
OPTIONS

DIMMABLE DALI (Push)

Code:  1034PDME2 (opal)
1034PDME19 (prism)

STRUCTURE FINISHES

White/Black



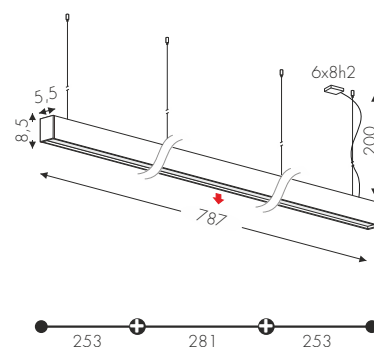
Mirò suspension

designed by T1 Lighting LAB

Suspension linear lamp, lenght 787cm,
composed by two 253cm modules and one
281cm module.

DOWN light emission

☐ BV White
☒ NE Black



CERTIFICATE

