

Mounting:	recessed
Environment:	indoor
Typical use:	residential, hotels, restaurants, common areas, large spaces, meeting rooms, museums, offices, schools, shops

OPTIC

Lighting effects:	down ugr with prismatic E19
Light output:	down 3'300lm
CCT:	2'700K (3'000K or 4'000K on request)
Light source:	Led SMD C.R.I.>90
Nominal lifetime:	50'000h L80B20 (Ta 25°C)

ELECTRICAL DATA

Wattage:	down 25W
Voltage:	220VAC
Power supply:	(on/off) included in remote

DIMENSIONS & WEIGHT

Dimensions: Length 37cm Width 10,5cm Height 6cm

Temperature ambient range: -10 / +35°C

Materials: body: metal
cover: pmma PRISM

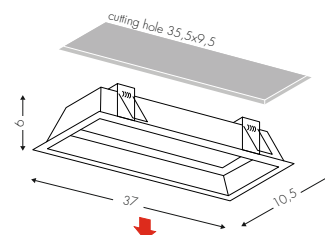
Weight: 2kg



Retrò recessed
designed by TI Lighting LAB

Recessed lamp with plasterboard frame,
dimensions 37x10,5cm, H.6cm.
DOWN light emission.

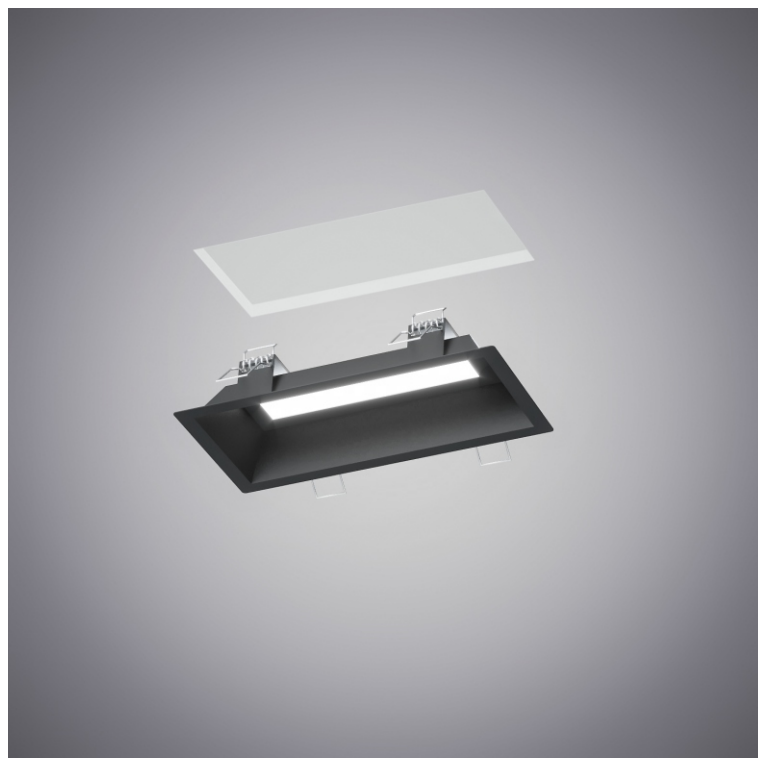
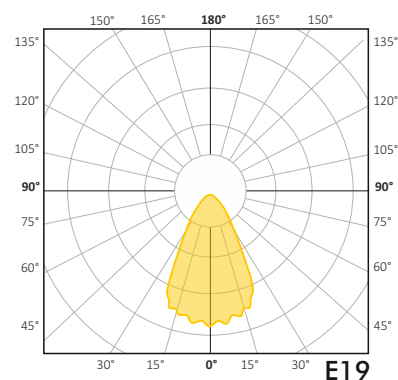
■ NE Black



CERTIFICATIONS



LIGHT EMISSION



OPTIONS

DIMMABLE DALI (Push)

Code:  4041HDM

PHASE CUT

Code: 4041HTF

EMERGENCY

Code: not available

STRUCTURE FINISHES

	BV	white
	OV	painting gold
	RV	painting copper
	BR	painting bronze

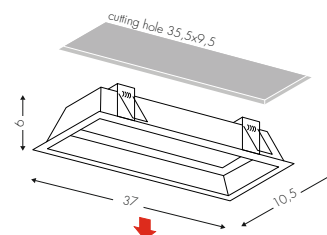


Retro recessed

designed by TI Lighting LAB

Recessed lamp with plasterboard frame, dimensions 37x10,5cm, H.6cm. DOWN light emission.

 NE Black



CERTIFICATIONS



LIGHT EMISSION

