

Mounting:	ceiling
Environment:	indoor
Typical use:	residential, hotels, restaurants, common areas, large spaces, meeting rooms, museums, offices, schools, shops

OPTIC

Lighting effects:	down ugr with prismatic E19	- down diffuse with E2 opal
Light output:	down prismatic 10'120lm	- down opal 8'602lm
CCT:	3'000K (4'000K on request)	
Light source:	Led SMD	C.R.I.>90
Nominal lifetime:	50'000h	L80B20 (Ta 25°C)

ELECTRICAL DATA

Wattage:	down 111W
Voltage:	24VDC
Power supply:	not included

DIMENSIONS & WEIGHT

Dimensions: Length 506cm Height 6,5cm Width 4,3cm

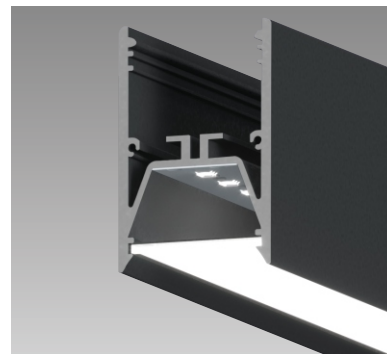
Ambient temperature range: -10 / +35°C

Materials:
body: extruded aluminum
cover: pmma OPAL / pmma PRISM

Weight: 10 kg



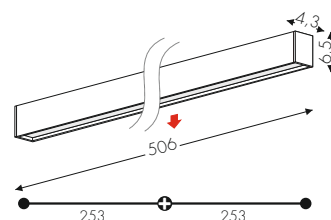
3037ME2 (opal)
3037ME19 (prism)



Emme24 ceiling
designed by TI Lighting LAB

Ceiling linear lamp, length 506cm, composed by two 253cm modules. DOWN light emission.

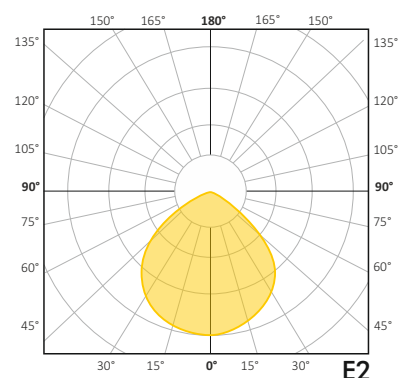
<input type="checkbox"/> BV	White
<input checked="" type="checkbox"/> NE	Black



CERTIFICATIONS



LIGHT EMISSION



3037ME2 (opal)
3037ME19 (prism)

OPTIONS

DIMMABLE DALI (Push)

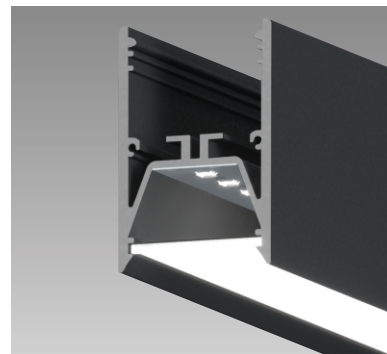
Code:  not available

PHASE CUT

Code: not available

STRUCTURE FINISHES

white/black

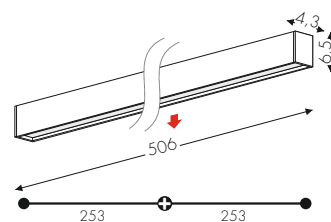


Emme24 ceiling

designed by TI Lighting LAB

Ceiling linear lamp, length 506cm, composed by two 253cm modules. DOWN light emission.

<input type="checkbox"/> BV	White
<input type="checkbox"/> NE	Black



CERTIFICATIONS



LIGHT EMISSION

