

Mounting:	ceiling
Environment:	indoor
Typical use:	residential, hotels, restaurants, common areas, large spaces, meeting rooms, museums, offices, schools, shops

OPTIC

Lighting effects:	down ugr with prismatic E19	- down diffuse with E2 opal
Light output:	down prismatic 11'240lm	- down opal 9'554lm
CCT:	3'000K (4'000K on request)	
Light source:	Led SMD	C.R.I.>90
Nominal lifetime:	50'000h	L80B20 (Ta 25°C)

ELECTRICAL DATA

Wattage:	down 124W
Voltage:	24VDC
Power supply:	not included

DIMENSIONS & WEIGHT

Dimensions: Length 562cm Height 6,5cm Width 4,3cm

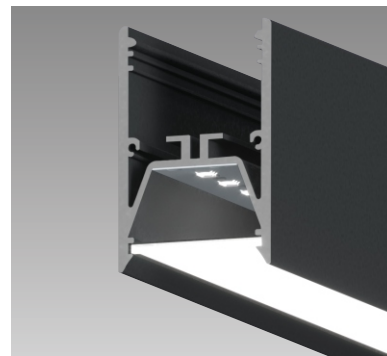
Ambient temperature range: -10 / +35°C

Materials:
body: extruded aluminum
cover: pmma OPAL / pmma PRISM

Weight: 11 kg



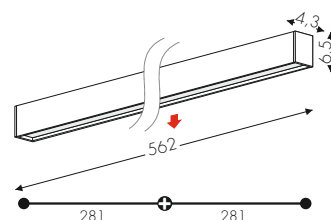
3037NE2 (opal)
3037NE19 (prism)



Emme24 ceiling
designed by TI Lighting LAB

Ceiling linear lamp, length 562cm, composed by two 281cm modules. DOWN light emission.

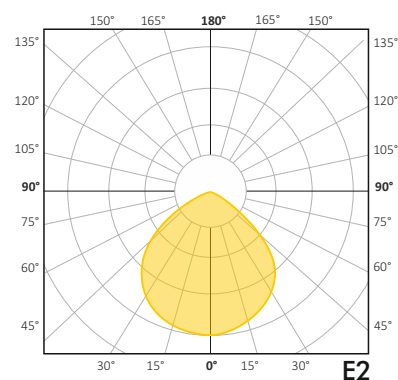
<input type="checkbox"/> BV	White
<input checked="" type="checkbox"/> NE	Black



CERTIFICATIONS



LIGHT EMISSION



OPTIONS

DIMMABLE DALI (Push)

Code:  not available

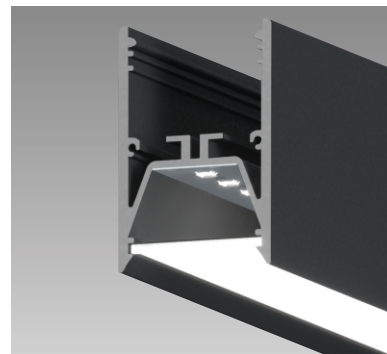
PHASE CUT

Code: not available

STRUCTURE FINISHES

white/black

3037NE2 (opal)
3037NE19 (prism)

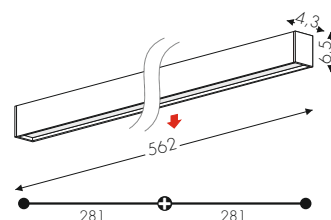


Emme24 ceiling

designed by TI Lighting LAB

Ceiling linear lamp, length 562cm, composed by two 281cm modules. DOWN light emission.

<input type="checkbox"/> BV	White
<input checked="" type="checkbox"/> NE	Black



CERTIFICATIONS



LIGHT EMISSION

