

Environment: indoor

Nominal lifetime: >50'000h

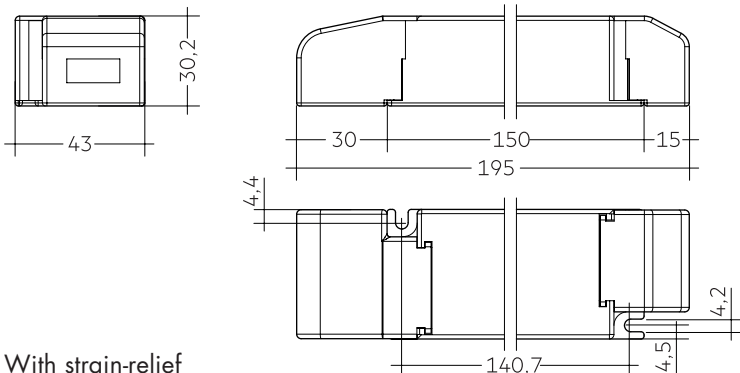
## ELECTRICAL DATA

**Wattage:** 35W  
**Voltage IN** 198 ~ 264VAC  
**Voltage OUT** 24VDC +/-5%  
**Management:** Dali/Push

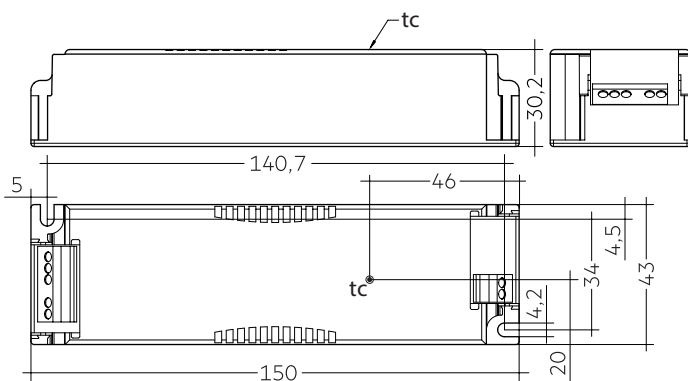
## WEIGHT & DIMENSIONS

**Dimensions with strain-relief:** Length 19,5cm - Width 4,3cm. Height 3,02cm.  
**Ambient temp. range:** (ta) -25...+50 °C  
**Materials:** Body: plastic  
**Peso:** 157 gr.

### Dimensions



With strain-relief



Without strain-relief

CODE

Rev.A

AE004D

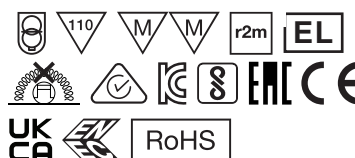


## Driver 35W - 24VDC

24VDC constant voltage power supply  
 Power 35W  
 Dimensions: Length 19,5cm - Width 4,3cm.  
 Height 3,02cm.

## CERTIFICATIONS

**lumDATA IP20 SELV**



Ø53

